

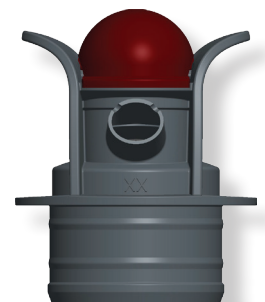
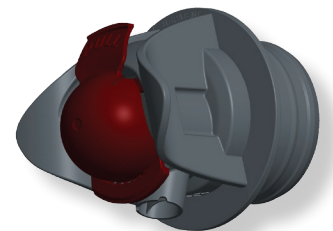
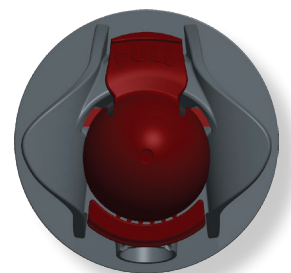
Mustang™

Worldwide Dispenser's Mustang™ tap has a smooth, uniform flow which is ideal for Bag-in-Box packaging and stand-up pouches. It is suitable for a wide range of liquids such as wine, milk, fruit juices, edible oils, syrups and concentrates.

Mustang's tap and gland –which connects the bag and tap together–is suitable for food products meeting FDA and EU regulations.

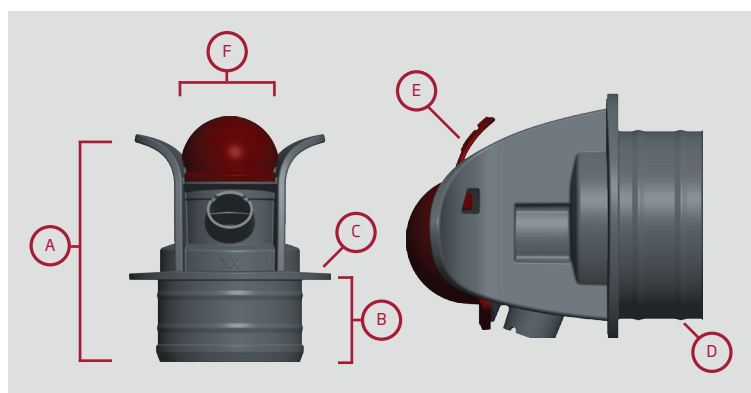
Features & Benefits:

- Gate closing system
- No post-drip
- Lowest OTR in the market
(< .04 CC/pkg/day)
- Directional control of flow
(1.10 oz./sec [31 mL/sec])
- Ergonomic front push design
- Tamper evident cap
- Low profile



Product Mustang Front Push	WD Part Number	Documentation Number
Tap for Stand-up Pouch	800495	TDS800495
Tap for Bag-in-Box	800525	TDS800525

Item	Component	Material	Color
1	Tamper Evident Cap	HDPE	Maroon
2	Button	TPE	Black
3	Body	HDPE	Black
4	Valve	HDPE	Black



Feature ID	Feature Description	Dims/Specs	
		Pouch	BIB
A	Valve Height (Total)	1.66" (42.2 mm)	1.95" (49.5 mm)
B	Handling Ring to end of Part Depth (Profile)	.38" (9.7 mm)	.65" (16.5 mm)
C	Handling ring Diameter	Ø1.61" (Ø40.9 mm)	Ø1.61" (Ø40.9 mm)
D	Spout Seal Bead Diameter	Ø1.12" (Ø28.4 mm)	Ø1.17" (Ø29.7 mm)
E	Tamper Evident Cap Pull Area	N/A	N/A
F	User Thumb Interface	Ø.75" (Ø19.1 mm)	Ø.75" (Ø19.1 mm)

* Dimensions verified within 24 hrs of moulding



Performance Description	Manufacturing Criteria	Notes
Leak test criteria	.7 ccm @ 3.5 psi	Pressure decay test
Oxygen Transmission Rate	< 0.04 cc/pkg/day	@75% R.H., 23°C, 20.9% O2
Flow Rate	1.1 ounces/ second (31 mL/sec)	Tap water at 4" of head-pressure
Button Depression Force (opening Force)	18 Newton minimum	This specification is for a button never before depressed. The average is 13 newton after initial activation.

Visit us @ www.dssmith.com/mustang